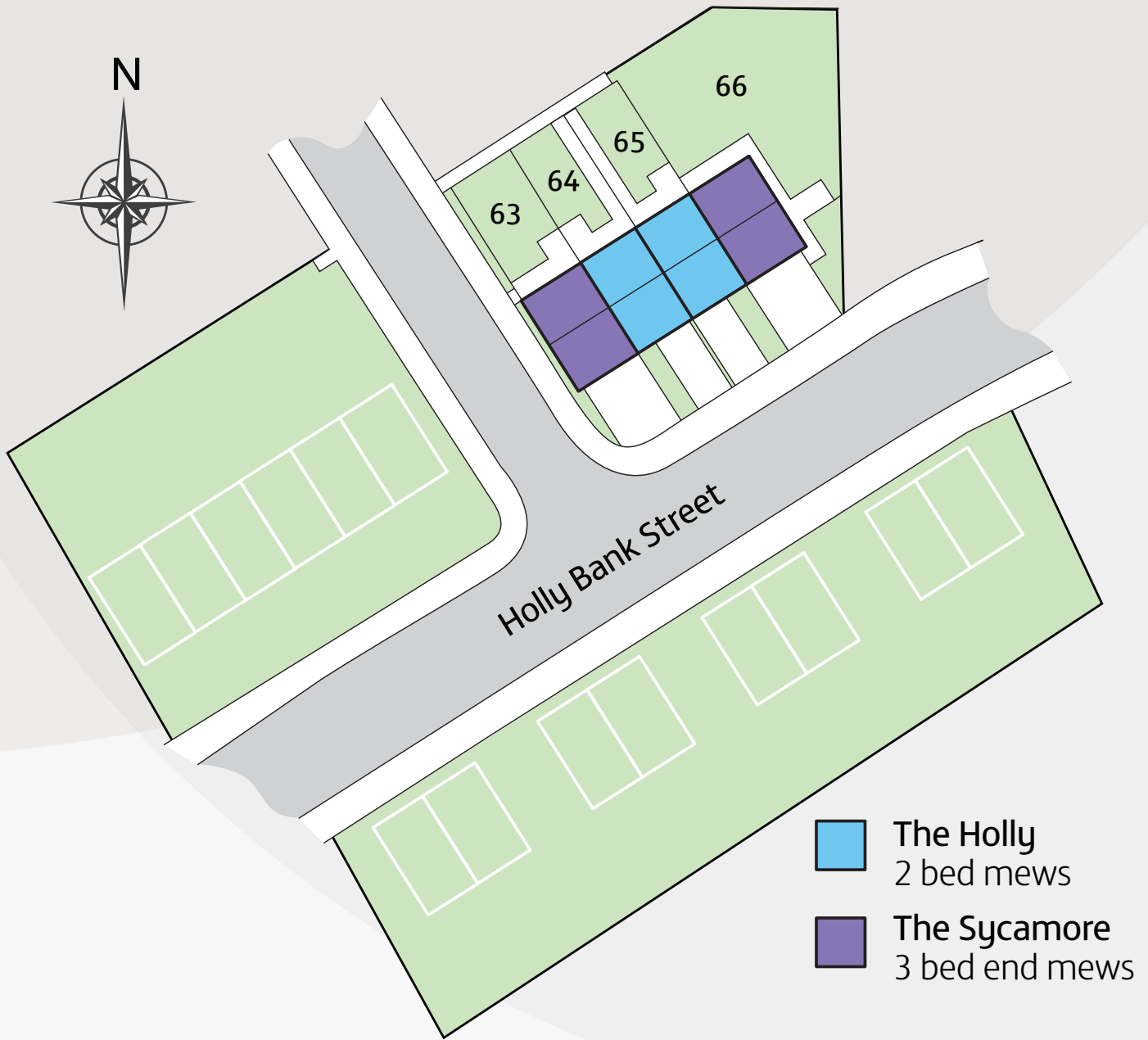
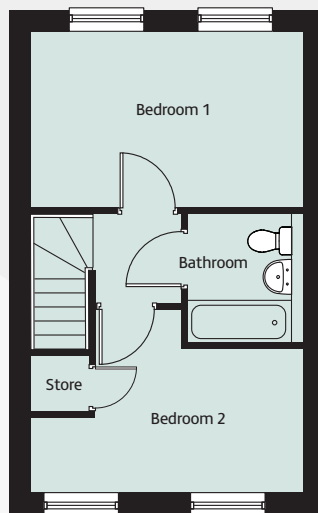
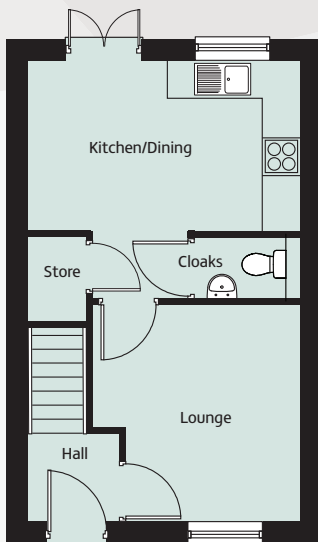


Holly Bank

Fingerpost, St Helens WA9 1EG



The Holly



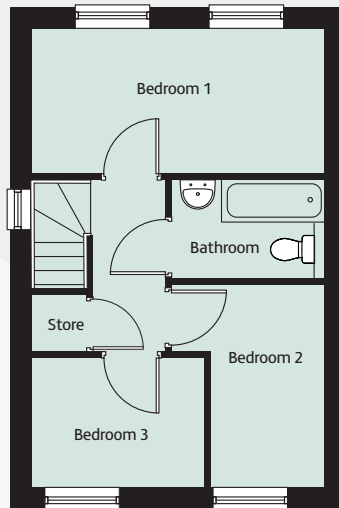
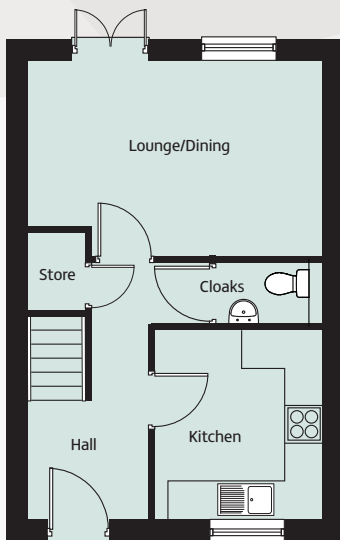
Ground Floor

Lounge	3.45m x 3.54m	11'4" x 11'7"
Kitchen/Dining	4.49m x 2.94m	14'9" x 9'8"
Cloaks	1.63m x 1.02m	5'4" x 3'4"

First Floor

Bedroom 1	4.49m x 2.94m	14'9" x 9'8"
Bedroom 2	4.49m x 2.34m	14'9" x 7'8"
Bathroom	1.76m x 2.11m	5'9" x 6'11"

The Sycamore



Ground Floor

Lounge/Dining	4.86m x 3.64m	15'11" x 11'11"
Kitchen	2.77m x 2.73m	9'1" x 8'11"
Cloaks	1.54m x 1.03m	5'0" x 3'4"

First Floor

Bedroom 1	4.86m x 2.38m	15'11" x 7'10"
Bedroom 2	1.86m x 3.36m	6'1" x 11'0"
Bedroom 3	2.90m x 2.13m	9'6" x 7'0"
Bathroom	2.52m x 1.66m	8'3" x 5'5"