

HARPERS GREEN

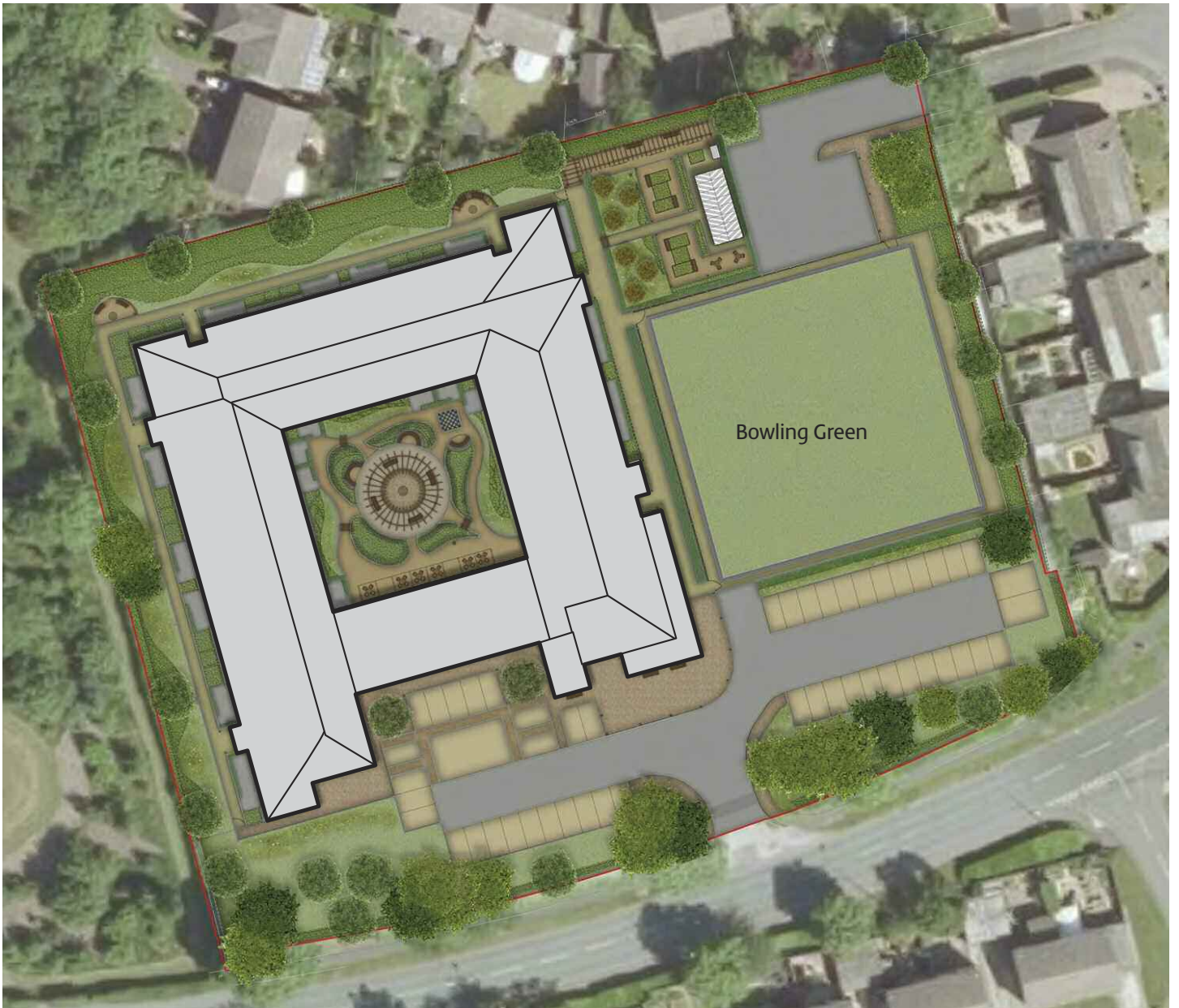
Harpers Road, Warrington



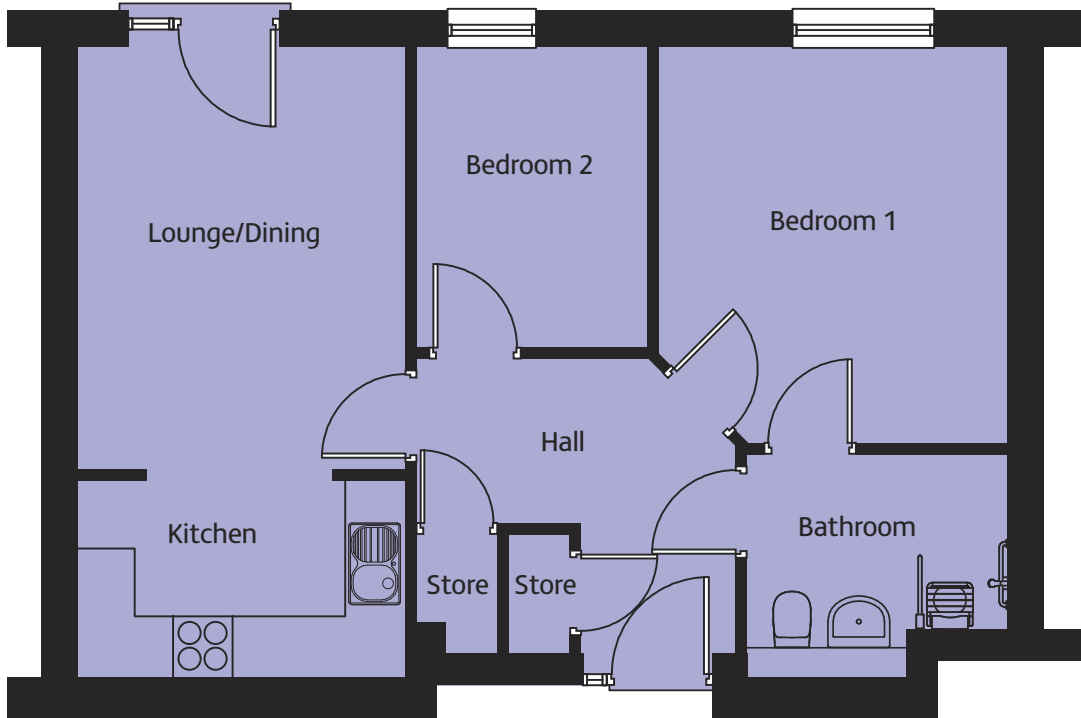


HARPERS GREEN

Harpers Road, Warrington

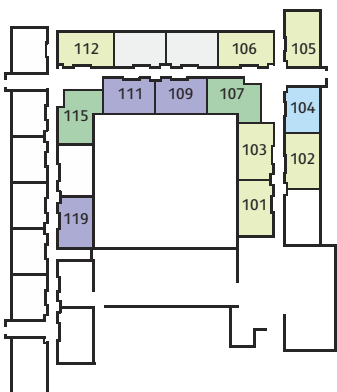


THE LAUREL

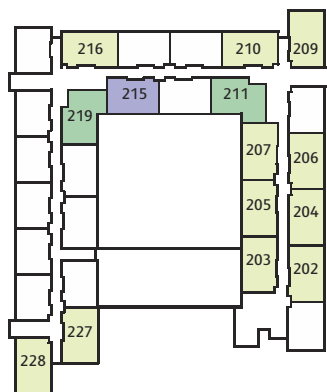


ROOM DIMENSIONS

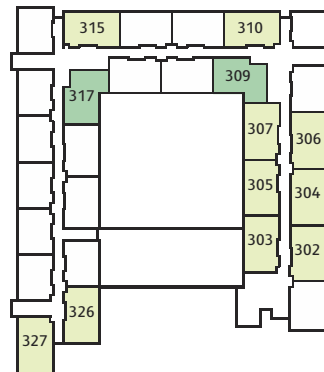
Lounge/Dining	4.12m x 3.24m	13'6" x 10'7"
Kitchen	1.96m x 3.24m	6'5" x 10'7"
Bedroom 1	3.45m x 3.87m	11'4" x 12'8"
Bedroom 2	2.94m x 2.27m	9'8" x 7'6"
Bathroom	2.30m x 1.97m	8'6" x 6'6"



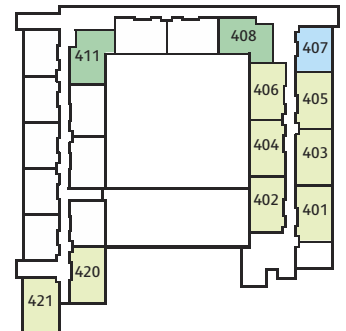
Ground Floor



First Floor

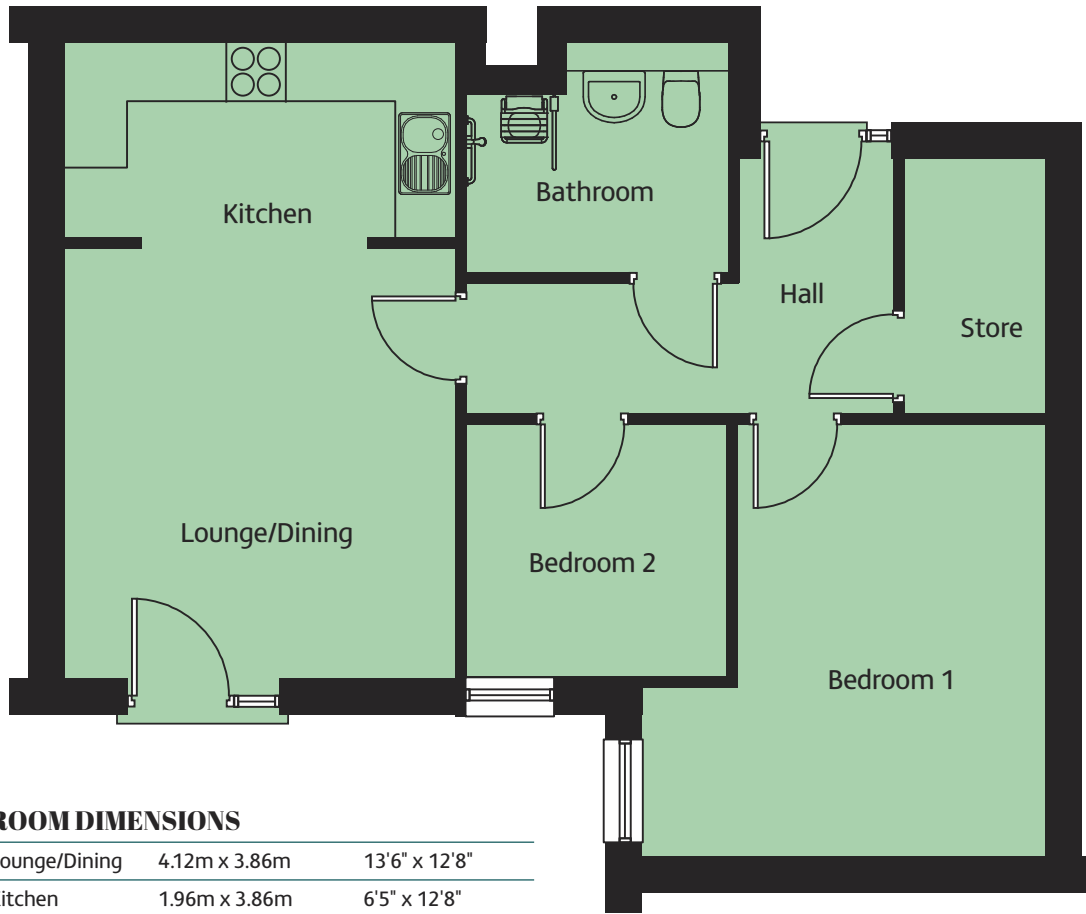


Second Floor



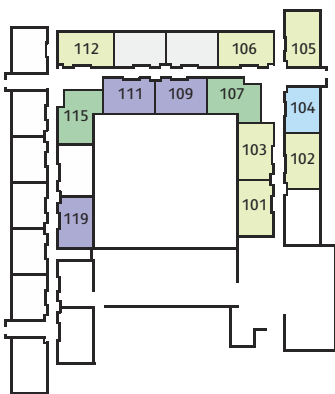
Third Floor

THE CEDAR

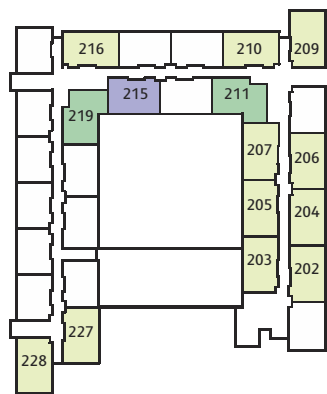


ROOM DIMENSIONS

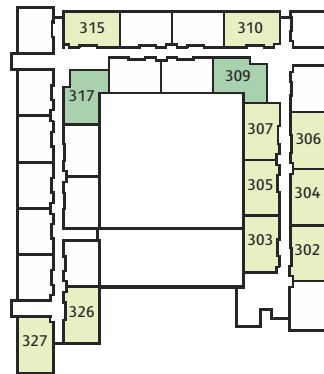
Lounge/Dining	4.12m x 3.86m	13'6" x 12'8"
Kitchen	1.96m x 3.86m	6'5" x 12'8"
Bedroom 1	3.96m x 4.27m	13'0" x 14'0"
Bedroom 2	2.58m x 2.47m	8'5" x 8'1"
Bathroom	2.58m x 2.29m	8'5" x 7'6"



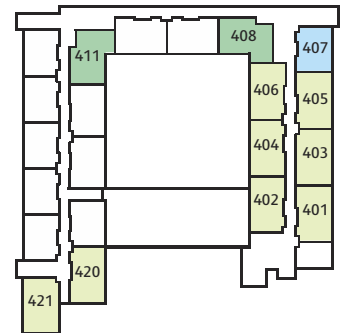
Ground Floor



First Floor

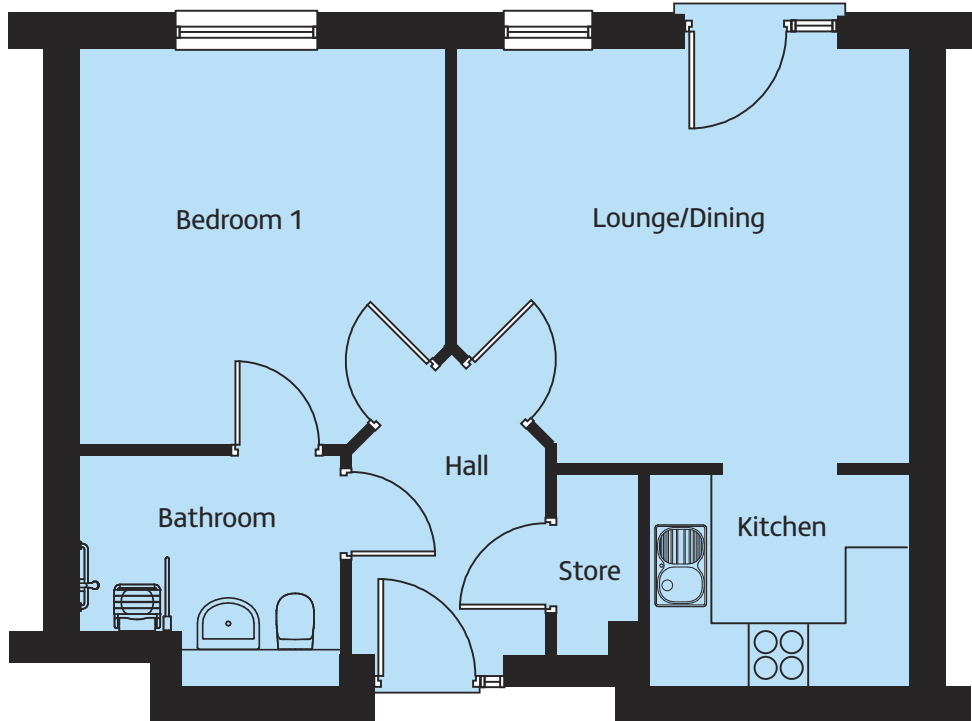


Second Floor



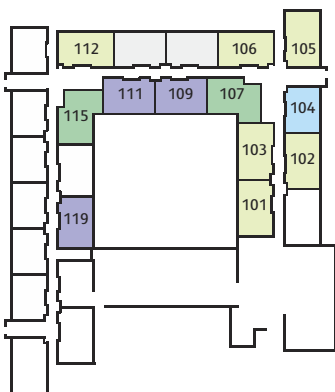
Third Floor

THE HOLLY

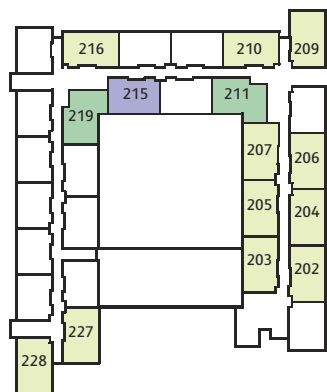


ROOM DIMENSIONS

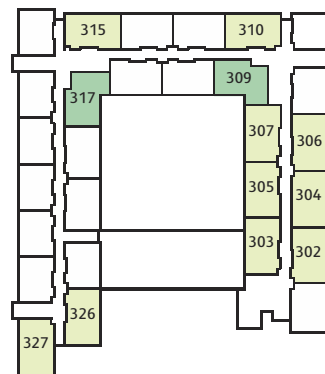
Lounge/Dining	4.07m x 4.41m	13'4" x 14'6"
Kitchen	2.09m x 2.56m	6'10" x 8'5"
Bedroom 1	3.85m x 3.59m	12'8" x 11'9"
Bathroom	2.59m x 2.30m	8'6" x 7'6"



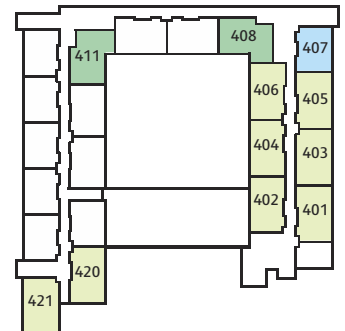
Ground Floor



First Floor

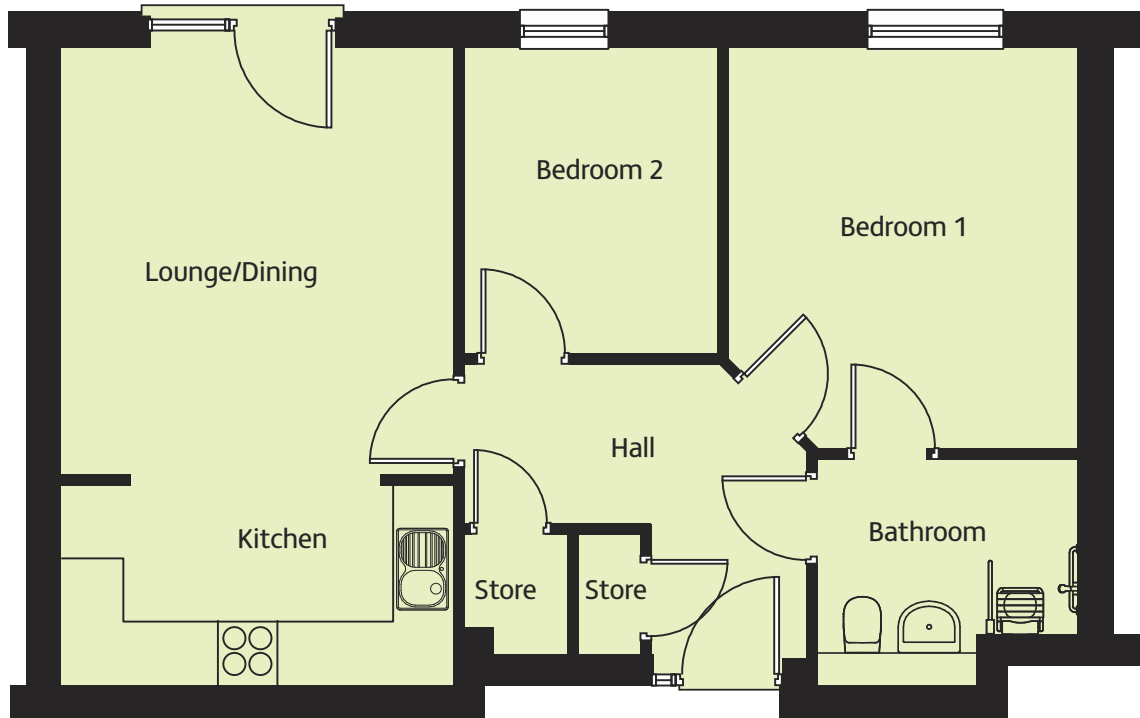


Second Floor



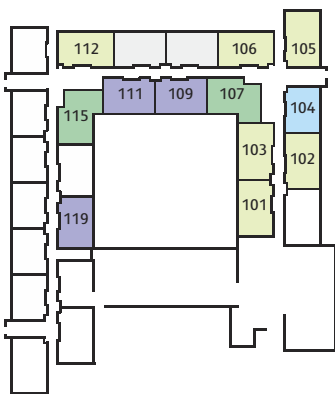
Third Floor

THE GARDENIA

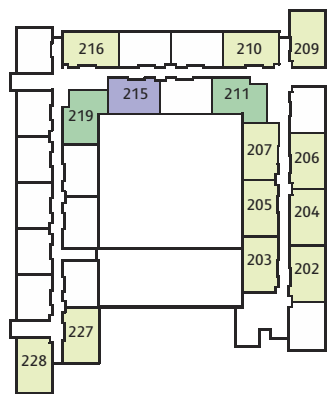


ROOM DIMENSIONS

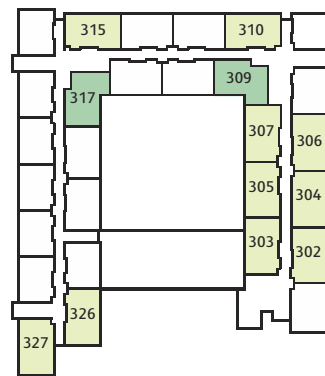
Lounge/Dining	4.19m x 3.83m	13'9" x 12'7"
Kitchen	1.96m x 3.83m	6'5" x 12'7"
Bedroom 1	3.41m x 3.87m	11'2" x 12'8"
Bedroom 2	3.03m x 2.50m	10'0" x 8'3"
Bathroom	2.59m x 2.29m	8'6" x 7'6"



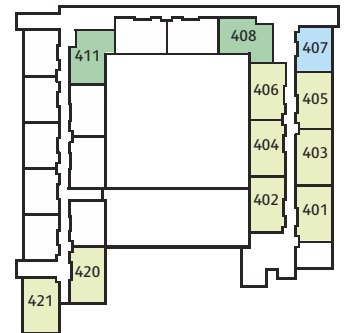
Ground Floor



First Floor



Second Floor



Third Floor