



# THE COPPICE

ROSSBANK

 torus homes

# The Coppice

Rossmore Road, Ellesmere Port CH65 3AN

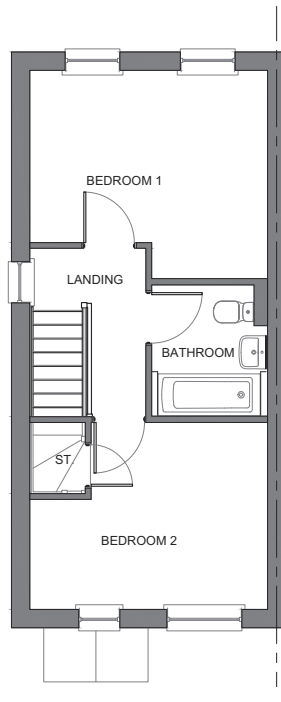
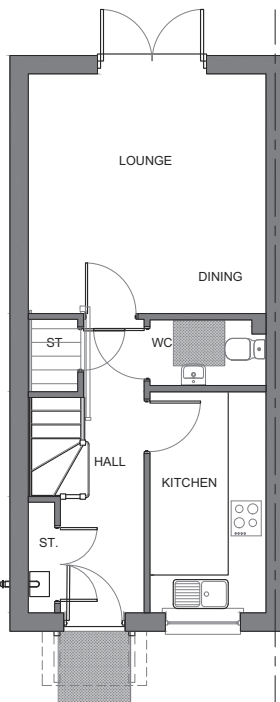
## Rent-to-Buy Homes



-  **The Snowhill**  
2 bed house
-  **The Draycott**  
2 bed house
-  **The Stanton**  
3 bed house



# The Snowhill



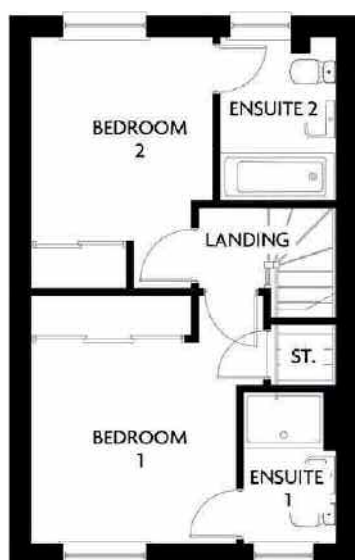
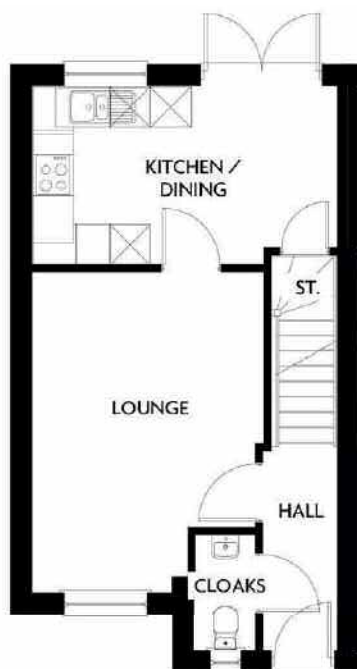
## Ground Floor

Lounge/Dining	3.90m x 3.95m	12'10" x 13'0"
Kitchen	1.90m x 3.65m	6'3" x 12'0"
Cloaks	1.90m x 1.09m	6'3" x 3'7"

## First Floor

Bedroom 1	3.90m x 3.43m	12'10" x 11'3"
Bedroom 2	3.90m x 3.08m	12'10" x 10'1"
Bathroom	1.91m x 2.18m	6'3" x 7'2"

# The Draycott



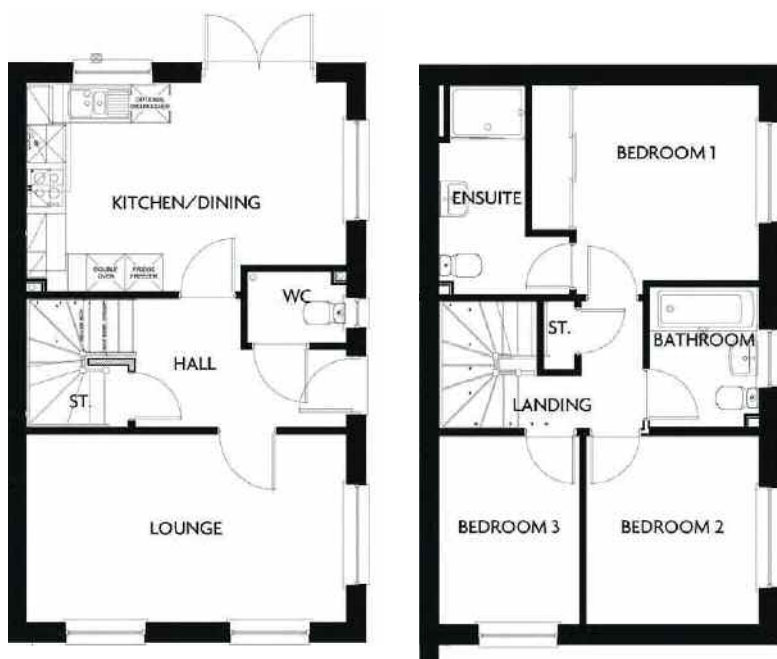
## Ground Floor

Lounge	3.42m x 4.72m	11'3" x 15'6"
Kitchen/Dining	4.48m x 2.67m	14'8" x 8'9"
Cloaks	0.9m x 1.73m	2'11" x 5'8"

## First Floor

Bedroom 1	3.02m x 3.69m	9'11" x 12'1"
Ensuite	1.36m x 2.26m	4'6" x 7'5"
Bedroom 2	2.67m x 3.70m	8'9" x 12'2"
Ensuite	1.71m x 2.40m	5'7" x 7'11"

# The Stanton



## Ground Floor

Lounge	5.00m x 2.91m	16'5" x 9'7"
Kitchen/Dining	5.00m x 3.28m	16'5" x 10'9"
Cloaks	1.54m x 1.13m	5'1" x 3'9"

## First Floor

Bedroom 1	3.56m x 3.28m	11'8" x 10'9"
Ensuite	2.04m x 3.28m	6'8" x 10'9"
Bedroom 2	2.71m x 2.97m	8'11" x 9'9"
Bedroom 3	2.20m x 2.97m	7'3" x 9'9"
Bathroom	1.71m x 2.21m	5'7" x 7'3"