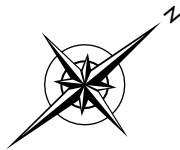
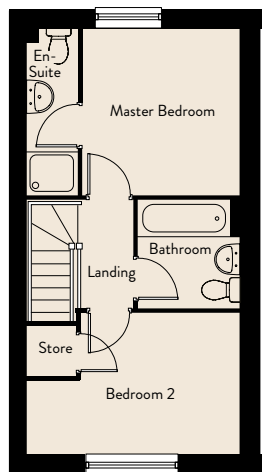
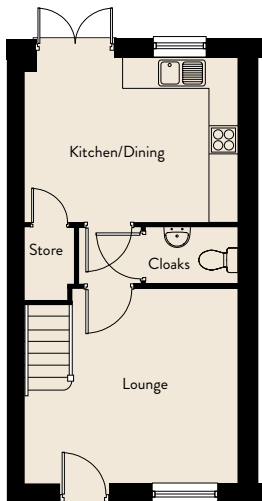




PARK GRANGE ST HELENS



HARDWICK



721 sqft

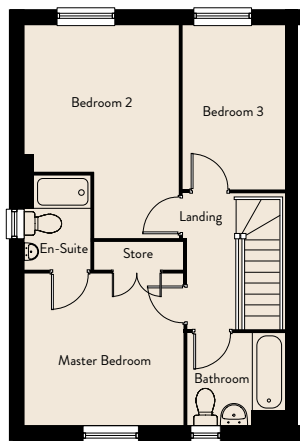
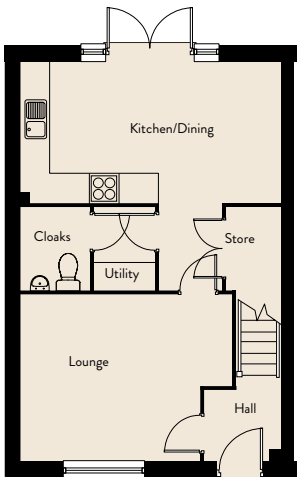
Ground Floor

Lounge	4.08m x 3.69m	13'5" x 12'1"
Kitchen/Dining	4.08m x 3.14m	13'5" x 10'4"

First Floor

Master Bedroom	2.99m x 3.15m	9'10" x 10'4"
Bedroom 2	4.08m x 2.69m	13'5" x 8'10"

BLUEBELL



1046 sqft

Ground Floor

Lounge	4.53m x 3.54m	14'10" x 11'7"
Kitchen/Dining	5.59m x 2.97m	18'4" x 9'9"

First Floor

Master Bedroom	3.35m x 3.21m	11'0" x 10'6"
Bedroom 2	3.35m x 4.58m	11'0" x 15'0"
Bedroom 3	2.16m x 3.53m	7'1" x 11'7"

MOUNTFORD



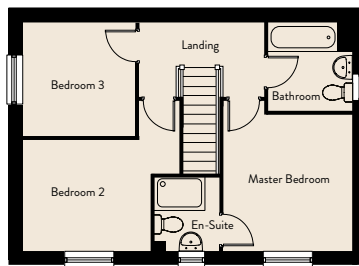
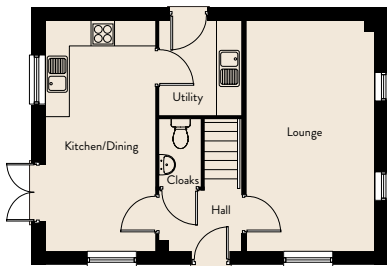
985 sqft

Ground Floor

Lounge	3.12m x 5.59m	10'3" x 18'4"
Kitchen/Dining	2.70m x 5.59m	8'10" x 18'4"

First Floor

Master Bedroom	3.18m x 3.35m	10'5" x 11'0"
Bedroom 2	3.13m x 2.74m	10'3" x 9'0"
Bedroom 3	2.76m x 2.76m	9'1" x 9'1"





PARK GRANGE ST HELENS

Price List – available homes

Thatto Heath, St Helens WA9 5PG

Plot	Description	House Type	Full Market Rent PCM	Rent to Buy Rent PCM
72, 73, 74	2 bedroom semi-detached	Hardwick	£975	£780
75	3 bedroom semi-detached	Mountford	£1125	£900
82, 83	3 bedroom semi-detached	Bluebell	£1150	£920

Disclaimer: Values are reviewed every 3 months and are subject to change. Prices, features and availability are correct at time of print but are subject to change without prior notice.