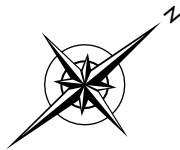
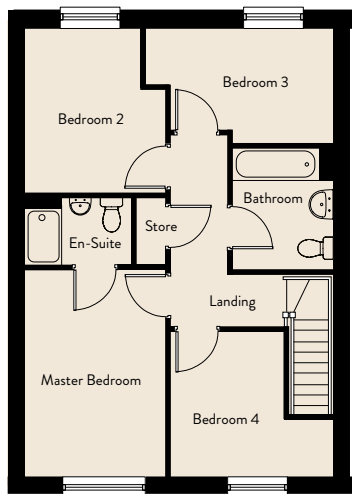
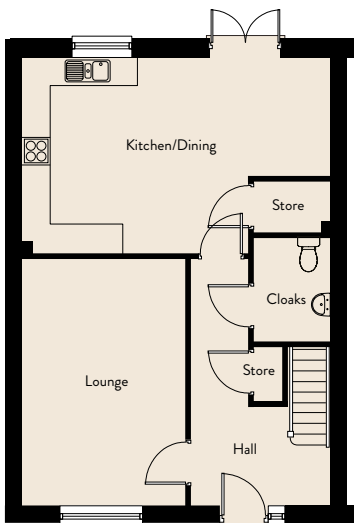




PARK GRANGE ST HELENS



DAHLIA



1403 sqft

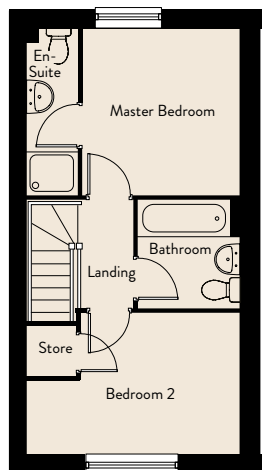
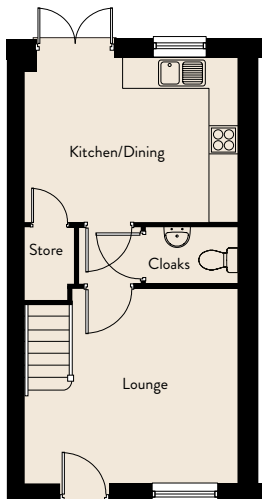
Ground Floor

Lounge	3.48m x 5.30m	11'5" x 17'5"
Kitchen/Dining	6.65m x 4.24m	21'10" x 13'11"

First Floor

Master Bedroom	3.04m x 4.46m	10'0" x 14'8"
Bedroom 2	2.49m x 3.56m	8'2" x 11'8"
Bedroom 3	4.07m x 2.52m	13'4" x 8'3"
Bedroom 4	3.52m x 3.14m	11'6" x 10'4"

HARDWICK



721 sqft

Ground Floor

Lounge	4.08m x 3.69m	13'5" x 12'1"
Kitchen/Dining	4.08m x 3.14m	13'5" x 10'4"

First Floor

Master Bedroom	2.99m x 3.15m	9'10" x 10'4"
Bedroom 2	4.08m x 2.69m	13'5" x 8'10"



PARK GRANGE ST HELENS

Price List – Available Homes

Plot	Description	House Type	Price	25% Share & Monthly Rent	50% Share & Monthly Rent	75% Share & Monthly Rent
23, 31	2 bedroom semi-detached	Hardwick	£200,000	£50,000 & £343.75	£100,000 & £229.17	£150,000 & £114.58
76, 77, 78, 79, 155,	4 bedroom semi-detached	Dahlia	£355,000	£88,750 & £610.16	£177,500 & £406.77	£266,250 & £203.39

Disclaimer: Values are reviewed every 3 months and are subject to change. A monthly service charge will apply. Prices, features and availability are correct at time of print but are subject to change without prior notice.