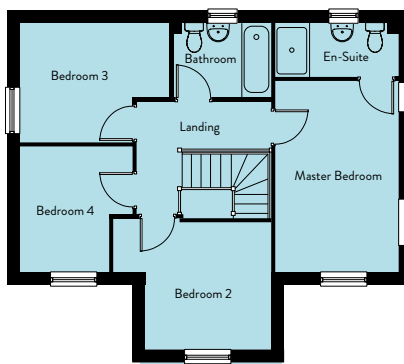
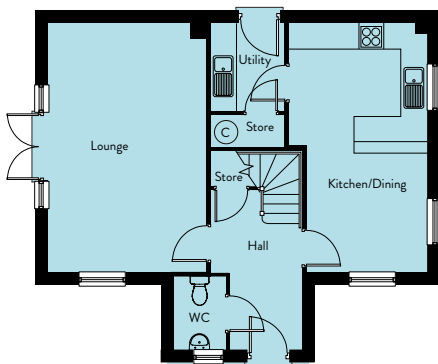


# OSPREY

1202 SQ FT



## Ground Floor

Lounge	3.64m x 5.75m	11'11" x 18'10"
Kitchen/Dining	3.17m x 5.75m	10'5" x 18'10"
Utility	1.68m x 2.02m	5'6" x 6'7"
WC	1.19m x 1.65m	7'0" x 5'5"

## First Floor

Master Bedroom	2.84m x 4.45m	9'4" x 14'7"
En-Suite	2.84m x 1.21m	9'4" x 4'0"
Bedroom 2	2.94m x 2.95m	9'8" x 9'8"
Bedroom 3	3.49m x 2.75m	11'5" x 9'0"
Bedroom 4	2.62m x 2.91m	8'7" x 9'7"
Bathroom	2.28m x 1.70m	7'6" x 5'7"